

SMALL 19TH CENTURY TABLE



VILNIS LĪDAKA

Grandmaster restorer of furniture and interior items
 restauratori@rundale.net
 Scientific Restoration Section at Rundāle Palace Museum
 Pilsrundāle, Bauska Municipality, LV-3921

TECHNICAL CONDITION OF THE ITEM PRIOR TO RESTORATION

The table's construction was unstable with a lot of mechanical damage. The entire item was covered with a layer of dust and grime. The surface of the table, as well as the ornaments worked into the crown-setting using an incrustation technique, have brass applique work, mother of pearl and veneer losses. The losses of the decorative elements in the incrustation make up 50-60%. Only a 5 cm long fragment remains of the decorative brass belt.

DESCRIPTION OF THE RESTORATION PROCESS

The item was disassembled. The dust and grime were removed by buffing the surfaces with steel wool. After this procedure, they were wiped down with a cotton wool tampon soaked in ethyl spirit. The brass ornament was cleaned mechanically, buffing it with fine buffing felt and polishing it. Suitable slim veneer inserts were fitted into places of veneer loss and glued with gluten glue.

The mechanical damage, the small losses of veneer and any cracks were filled in with black *BORMA WACHS* water base acrylic putty. The filled-in spots were toned with ethyl spirit stains after the application of lacquer. Small mother of pearl plates of suitable size and form were glued into the spots where there were losses in the mother of pearl incrustation; they were mechanically thinned so as to correspond to the original, prior to their gluing. The gaps between the plates were filled with putty. The missing brass ornament in the intarsia was created anew, using a fragment which had been preserved as the analogue. The ornament was transferred to the brass plate and the required form was cut out and placed in the areas where it had been lost. The decorative brass belts were cast per the original example. After the restoration of the wooden parts, the item was assembled, using a polyvinyl acetate glue (PVA) for the gluing. The item was varnished with a toned, black shellac and polished with a shellac lacquer.



Fig.1 Table after restoration



Fig.2 Table before restoration, photo from the year 1982



Fig.3 Process of restoration, the table is disassembled

KEYWORDS: TABLE, INCRUSTATION, MOTHER OF PEARL, VENEER
DATED: SECOND-HALF OF THE 19TH CENTURY, RUSSIA
MATERIAL: WOOD, VENEER, BRASS, MOTHER OF PEARL, STAIN, SHELLAC
SIZE: 61.7 CM, 111 CM, 67.5 CM
OWNER: RUNDALE PALACE MUSEUM



Fig.13 Fragment of the table after restoration



Fig.4 Details from the table before restoration



Fig.5 Table legs before restoration



Fig.12 Table details in the process of restoration



Fig.6 Fragment of the table detail before restoration



Fig.7 Fragment of the table top before restoration



Fig.11 Fragment of the table top in the process of restoration

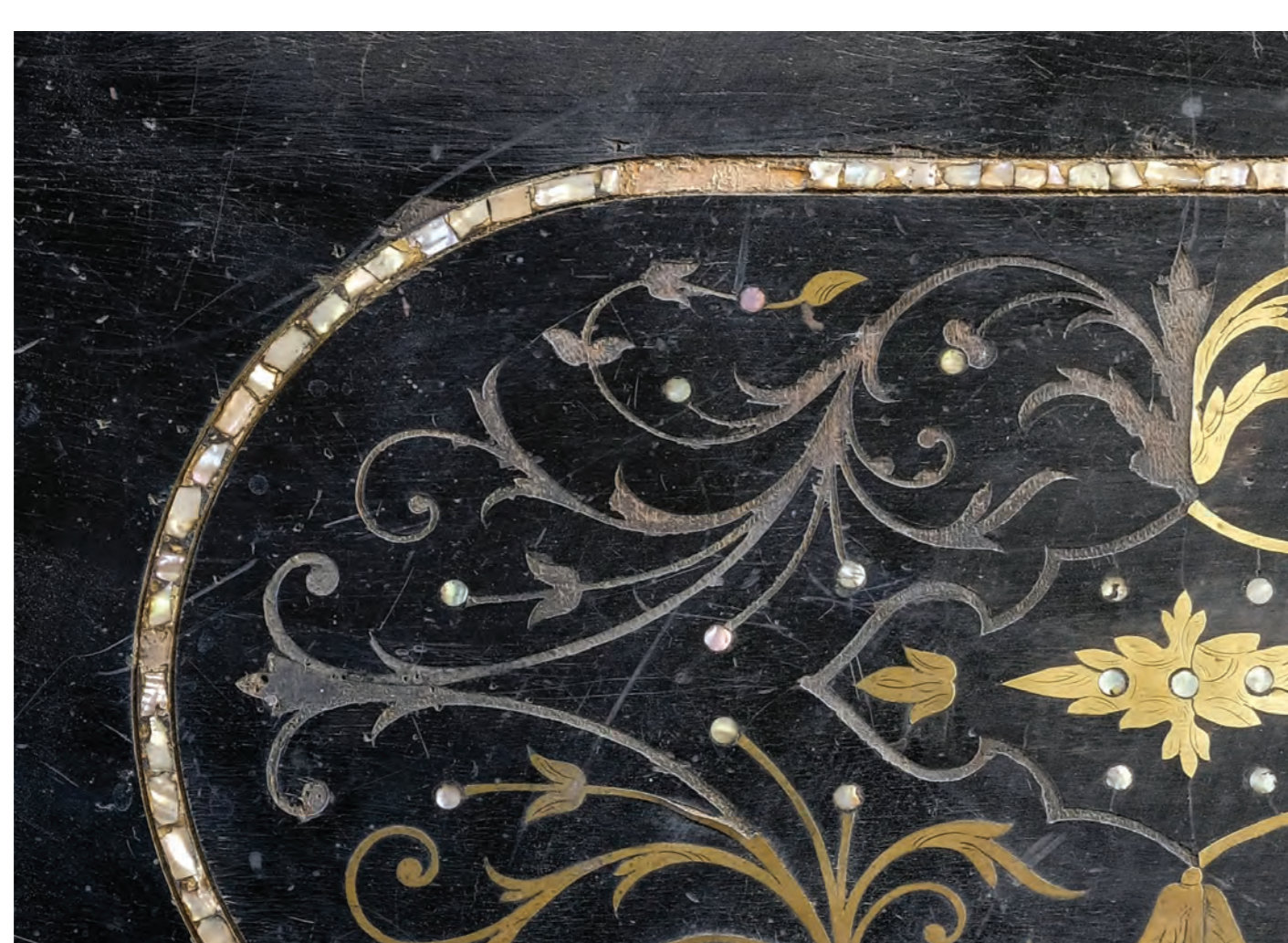


Fig.8 Fragment of the table top ornament before restoration



Fig.9 Fragment of the table top ornament in the process of restoration



Fig.10 Table top in the process of restoration